

# Install and configure access to Capalnstaller Management Portal

## Introduction

A simple overview of the steps involved in installing and enabling access to the Capalnstaller Management Portal

### Requirements

The Management Portal relies on the following software

- Windows Server 2012 R2 (64 bit only) with IIS 8 or above
- The IIS *Default Website* must be present
- NET 4.5.1 or above

### Deploy a Back-end Service

To be able to authenticate against an Active Directory, the Management Portal relies on the Capalnstaller Back-end Service.

If you already have a Back-end Service Deployed for other purposes, skip this step.

#### Read more

- How to [Deploy the Back-end Service](#)

### Enable the Web Server

Requirements:

- Windows Server 2012 R2 (64 bit only) with IIS 8 or above
- The IIS *Default Website* must be present
- NET 4.5.1 or above

Enable the Web Server (IIS) role on the Windows Server that are set to host the Management Portal site. This servers DNS name will be the base URL for access to the Management Portal.

#### Read more

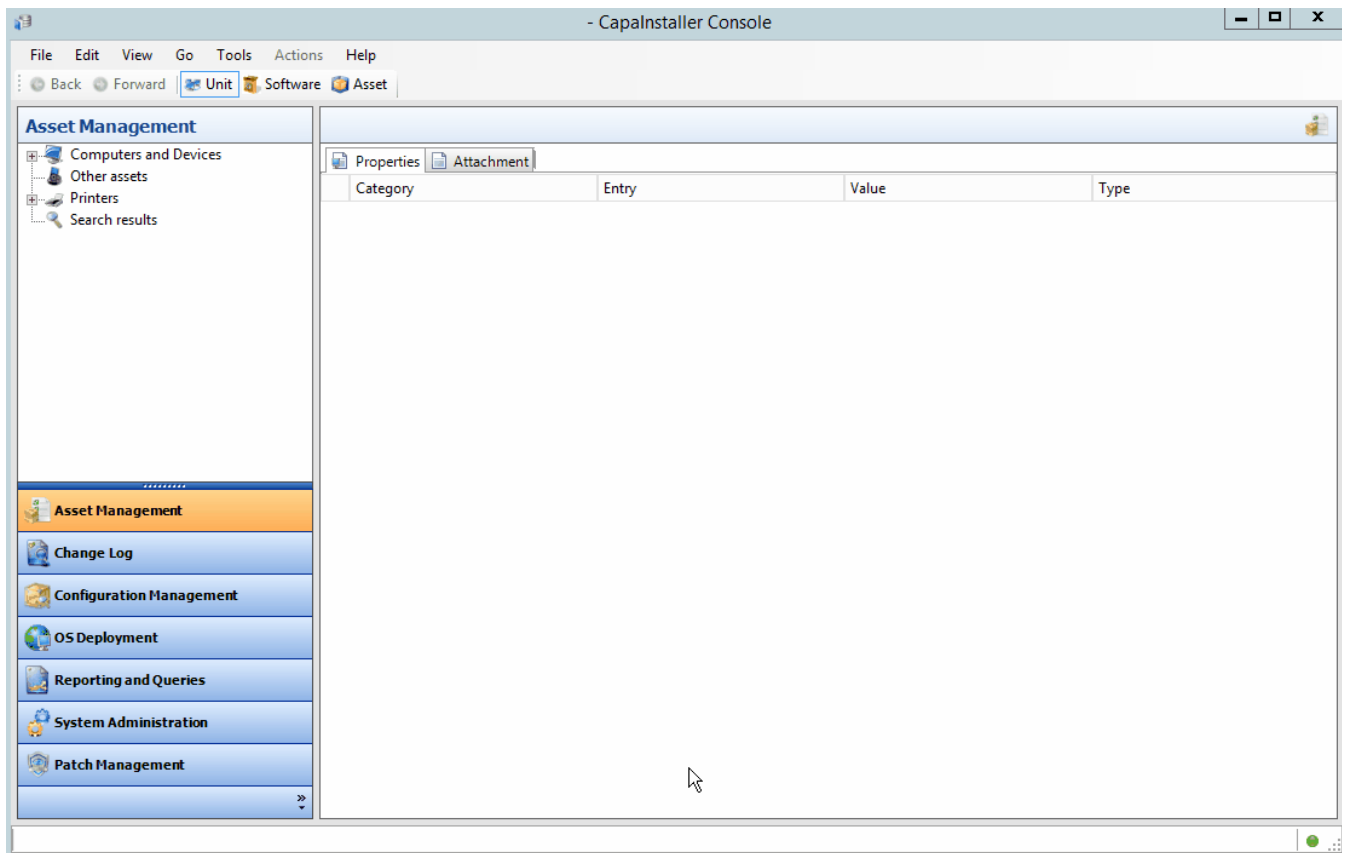
- [Installing IIS8 on Windows server 2012](#)

### Enable Security and add Trustee

Enabling Security and adding a Trustee from Active Directory is done under **System Administration** in the **Capalnstaller Console**.

In this example we add the Active Directory group "Supporters" to the default "Supporters" profile in Capalnstaller.

Members of this AD group will now inherit the Access permissions for the profile.



## Execute the Windows Installer package

Execute the Windows Installer package (**CapalInstaller Management Portal.msi**) for the Management Portal.

Locate the file in the share of the root configuration management point e.g. "...\\CMPDEV\\Resources\\Management Portal\\CapalInstaller Management Portal.msi"

## Configure Database access

1. To configure access to the CapalInstaller Database insert the Database server URL and the Database name
2. Enter the SQL Server Database login that is used for access to the CapalInstaller Database

The screenshot shows a Windows-style dialog box titled "CapalInstaller Management Portal Setup". The main heading is "Database" with the instruction "Specify the database connection string". The dialog is divided into sections: "Database connection", "Server information", and "Authentication". Under "Server information", there are two text input fields labeled "Server" and "Database". Under "Authentication", there are two text input fields labeled "Username" and "Password". At the bottom left, there is a section for "Advanced Installer" which is currently empty. At the bottom right, there are three buttons: "< Back", "Next >" (which is highlighted with a blue border), and "Cancel".

## Installation complete

After completing the above steps, the **CapalInstaller Management Portal** is now available

Simply point a webbrowser to <http://<server>/ManagementPortal> and log in with a user with valid credentials

## Read more

- [Updating the Management Portal](#)